

#1 & #2 CUT LIST

#	QTY	MATERIAL	LENGTH	SHAPE
R1	26	#6 BAR	16'-9"	STR
R2	26	#6 BAR	6'-9"	STR
R3	36	#7 BAR	6'-9"	STR
R4	36	#7 BAR	16'-9"	STR
R5	84	#4 BAR	5'-9"	STR

TOTAL REBAR WEIGHTS
 SIZE WEIGHT
 #4 318 LBS. EPOXY
 #6 919 LBS. EPOXY
 #7 1730 LBS. EPOXY

#3 CUT LIST

#	QTY	MATERIAL	LENGTH	SHAPE
R1	34	#6 BAR	16'-9"	STR
R2	34	#6 BAR	6'-9"	STR
R3	48	#7 BAR	6'-9"	STR
R4	48	#7 BAR	16'-9"	STR
R5	84	#4 BAR	7'-9"	STR

TOTAL REBAR WEIGHTS
 SIZE WEIGHT
 #4 435 LBS. EPOXY
 #6 1200 LBS. EPOXY
 #7 2308 LBS. EPOXY

#4 CUT LIST

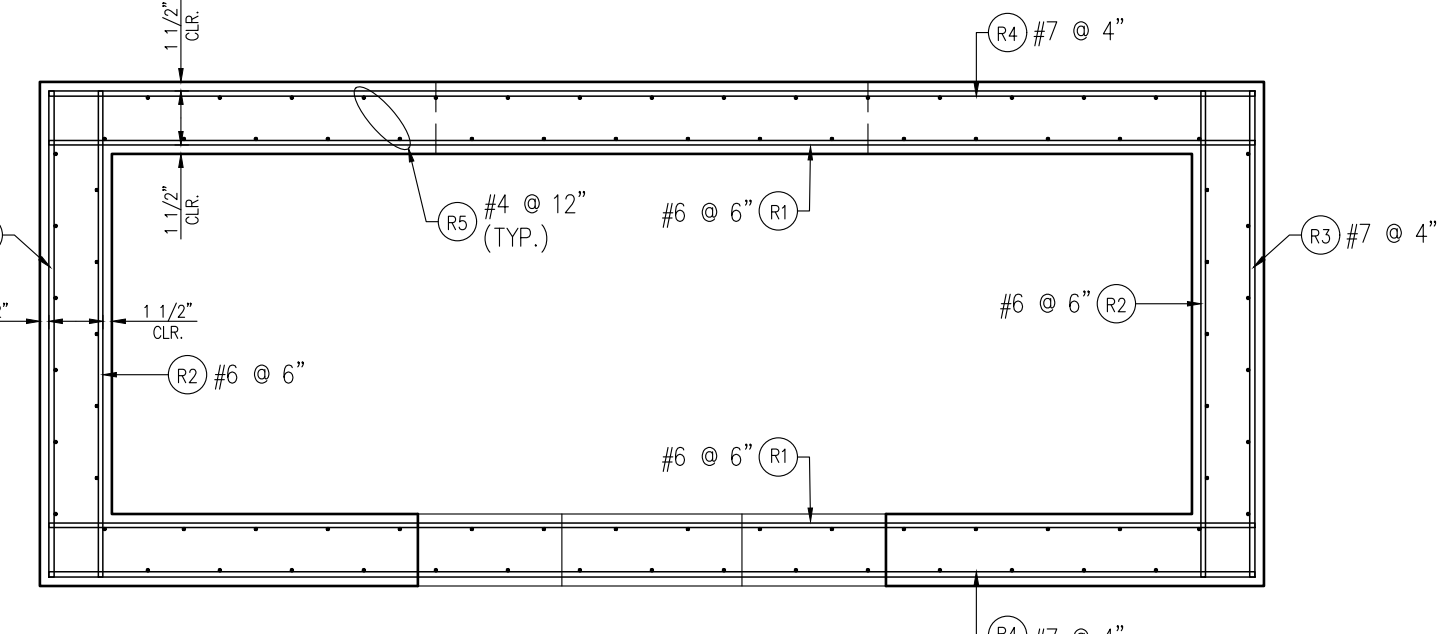
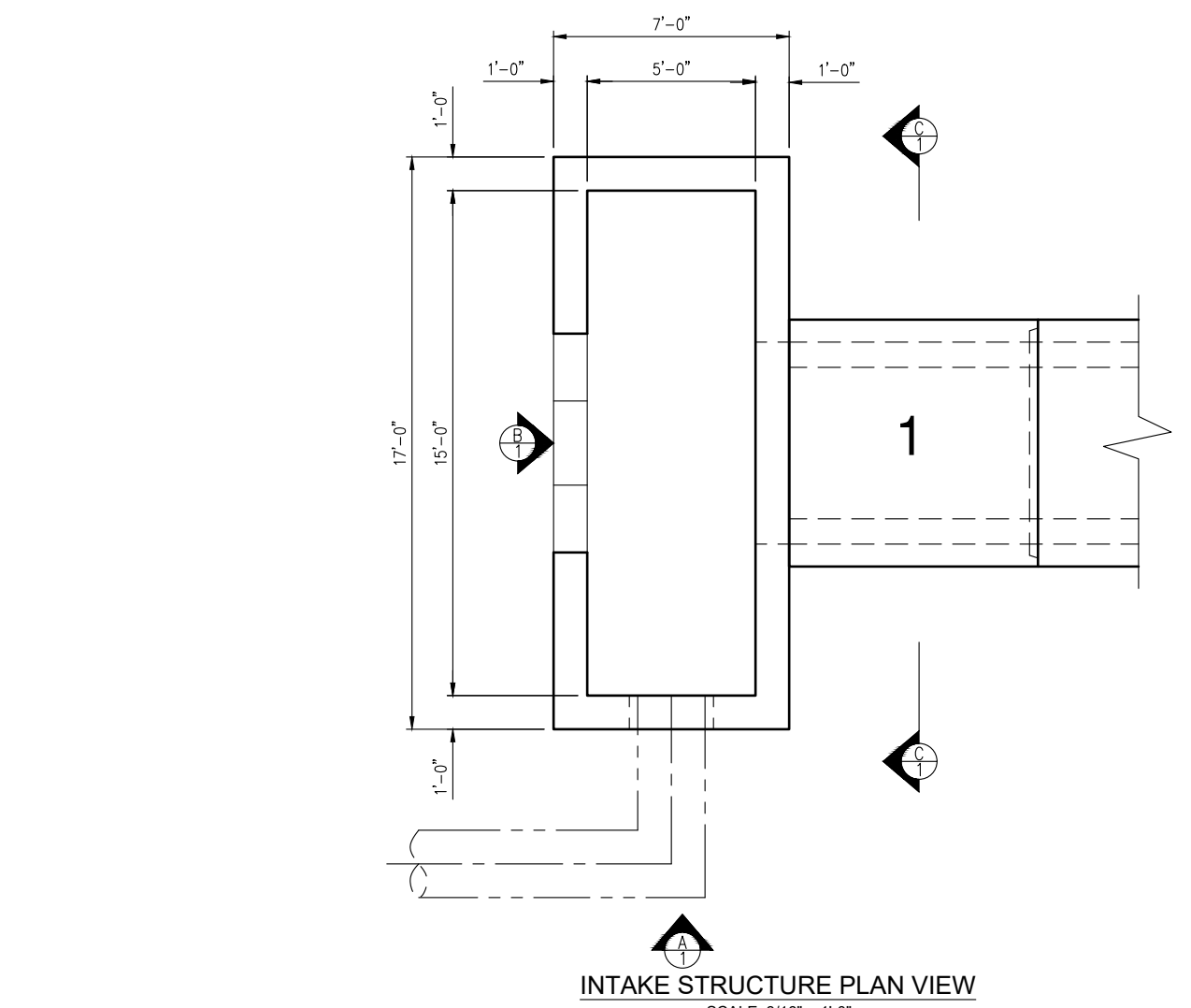
#	QTY	MATERIAL	LENGTH	SHAPE
R1	30	#6 BAR	16'-9"	STR
R2	30	#6 BAR	6'-9"	STR
R3	44	#7 BAR	6'-9"	STR
R4	44	#7 BAR	16'-9"	STR
R5	84	#4 BAR	6'-11"	STR

TOTAL REBAR WEIGHTS
 SIZE WEIGHT
 #4 388 LBS. EPOXY
 #6 1060 LBS. EPOXY
 #7 2115 LBS. EPOXY

#5 CUT LIST

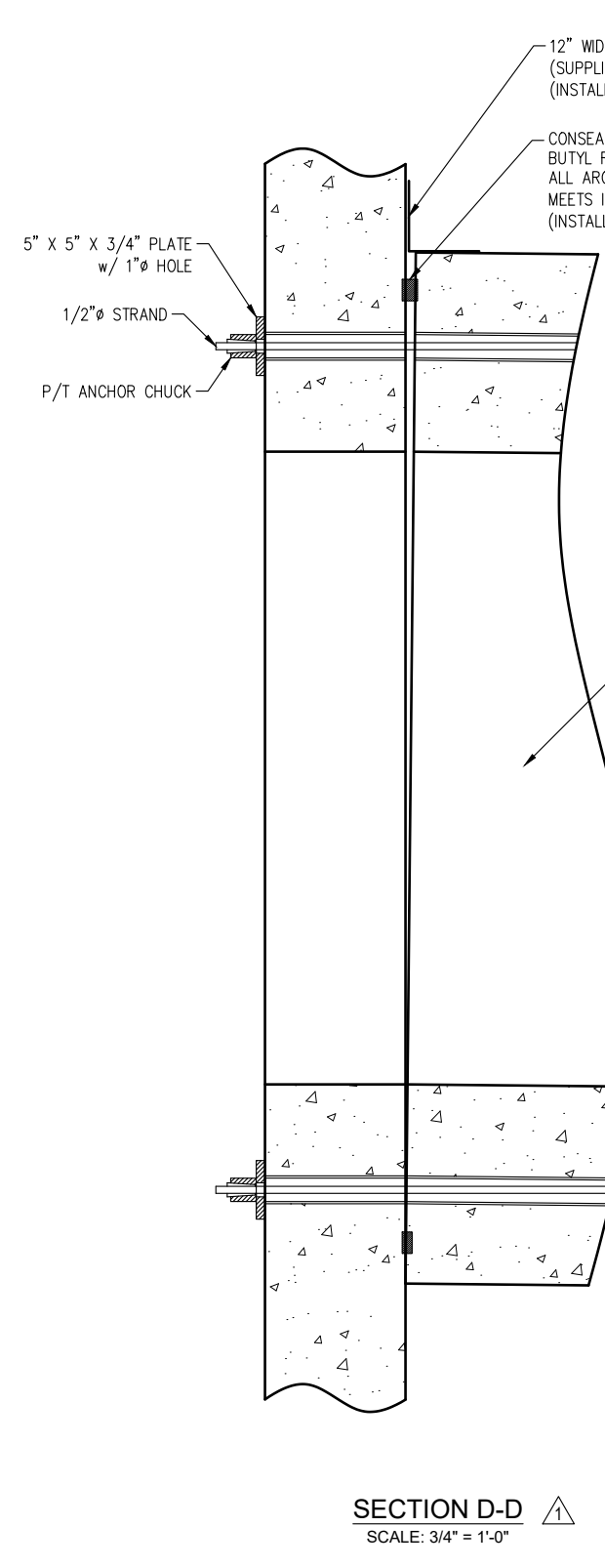
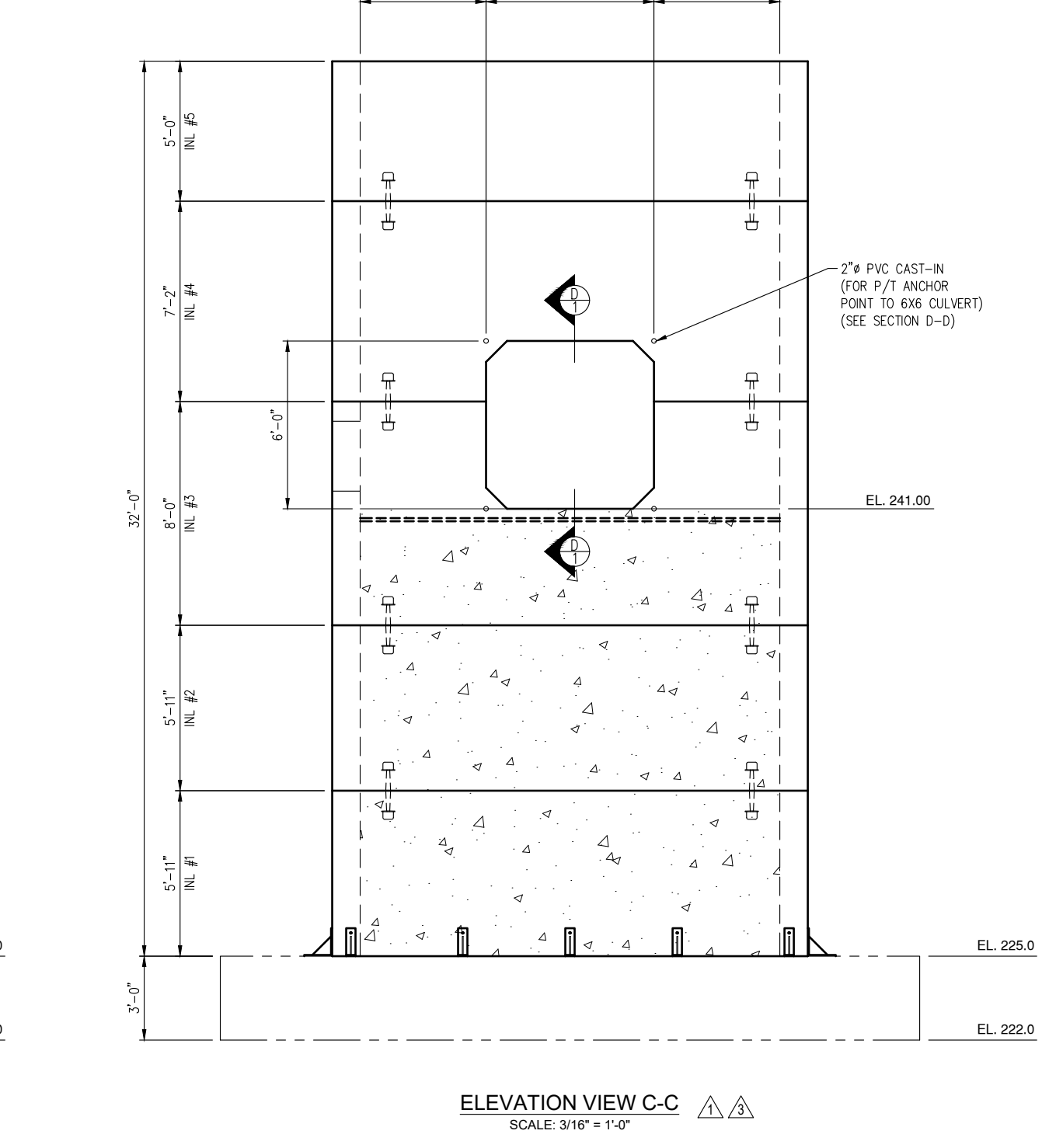
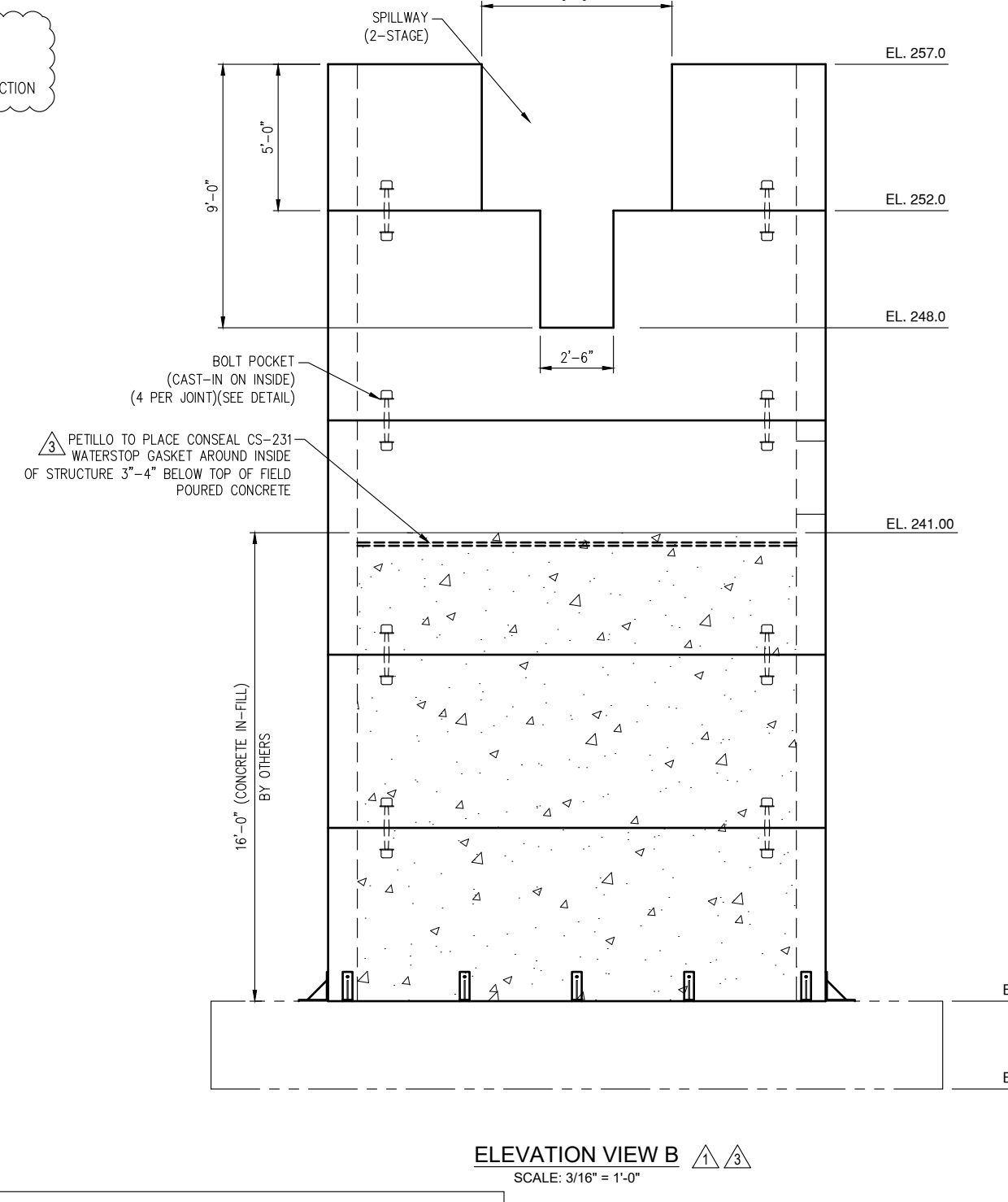
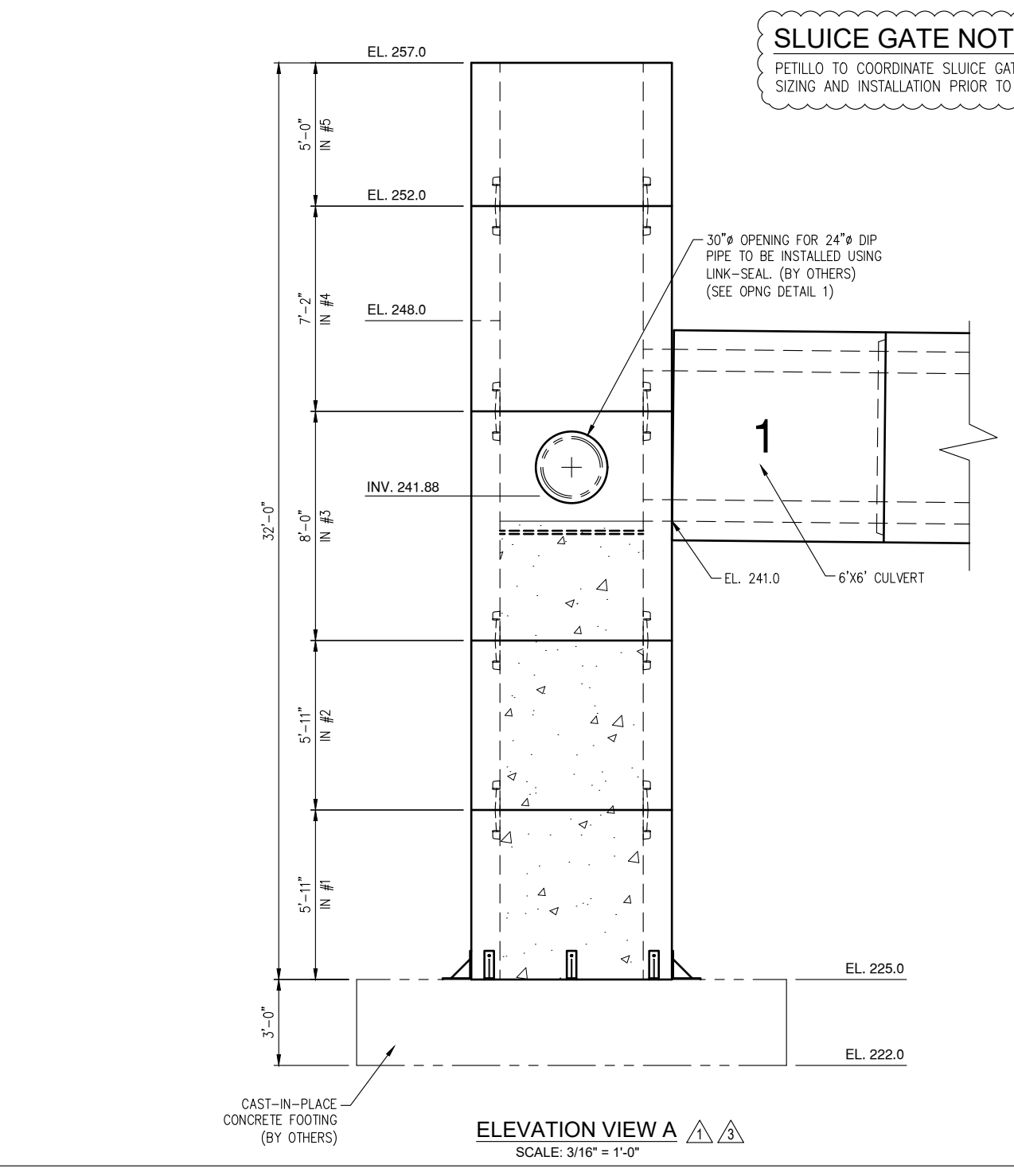
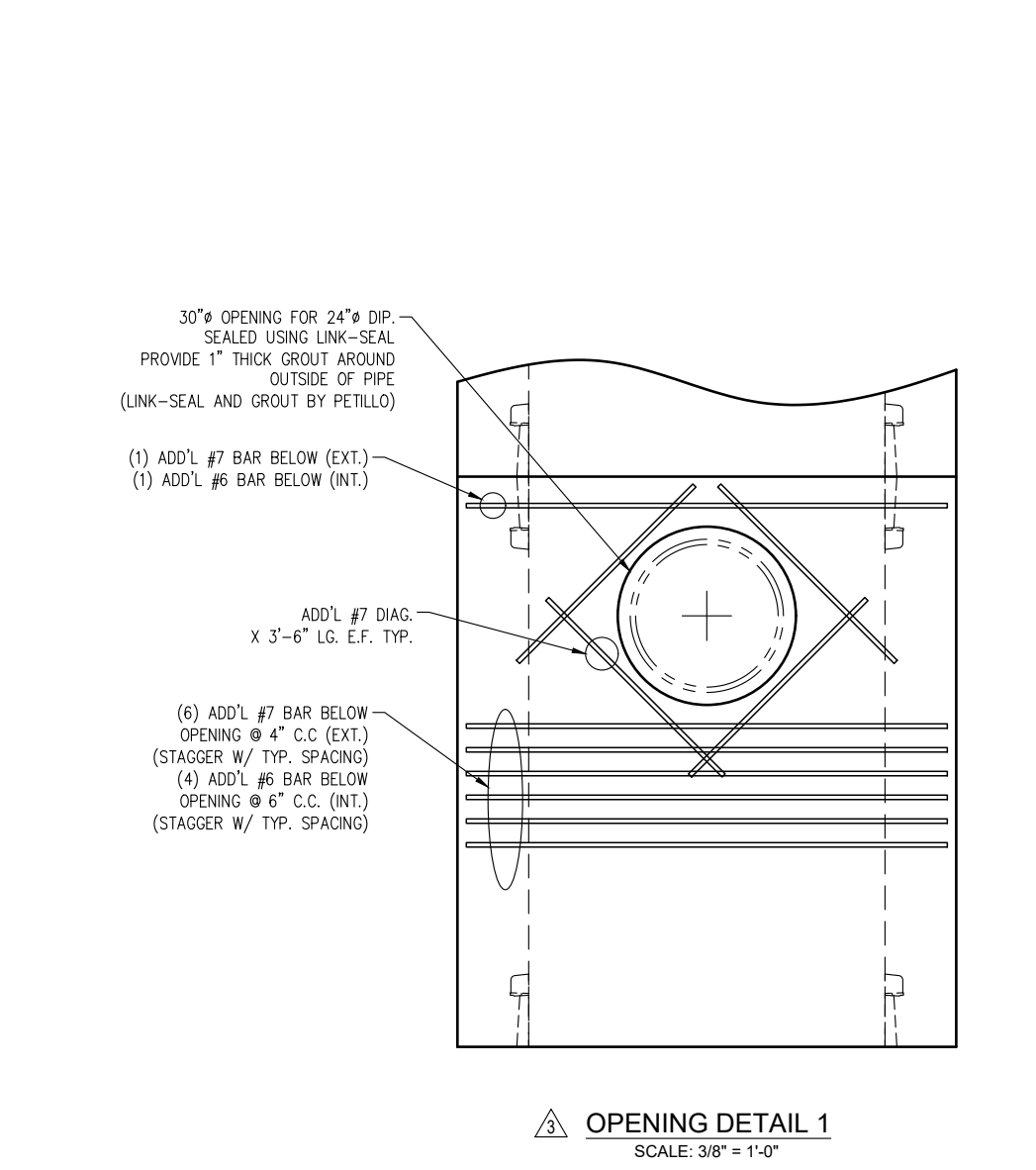
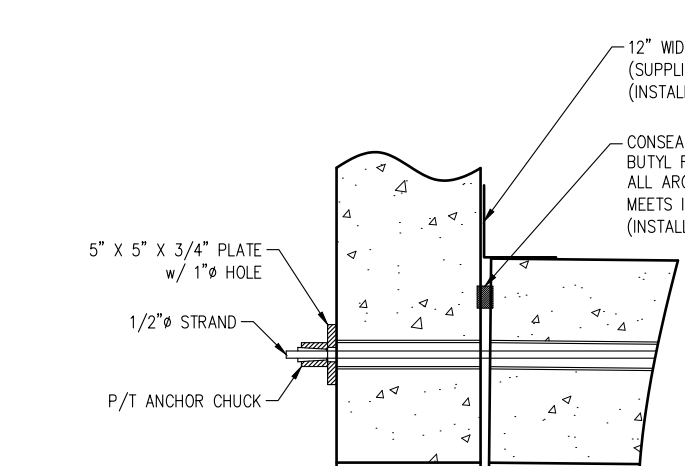
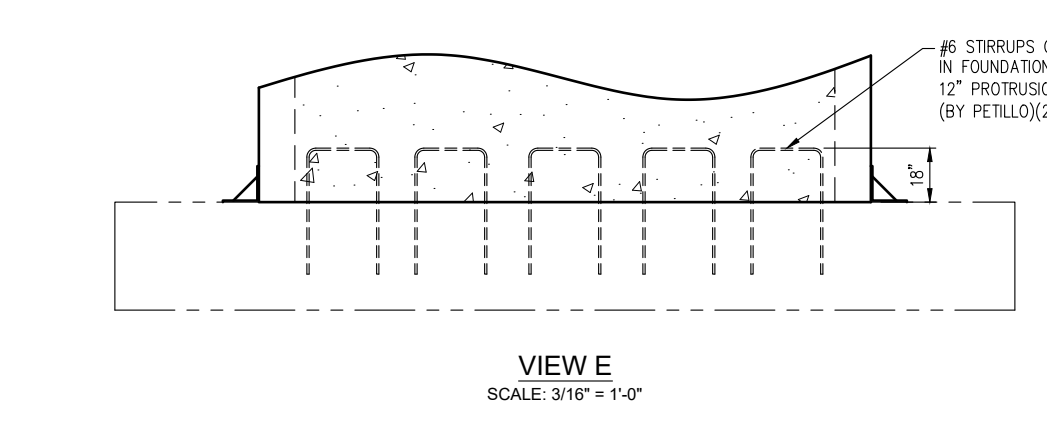
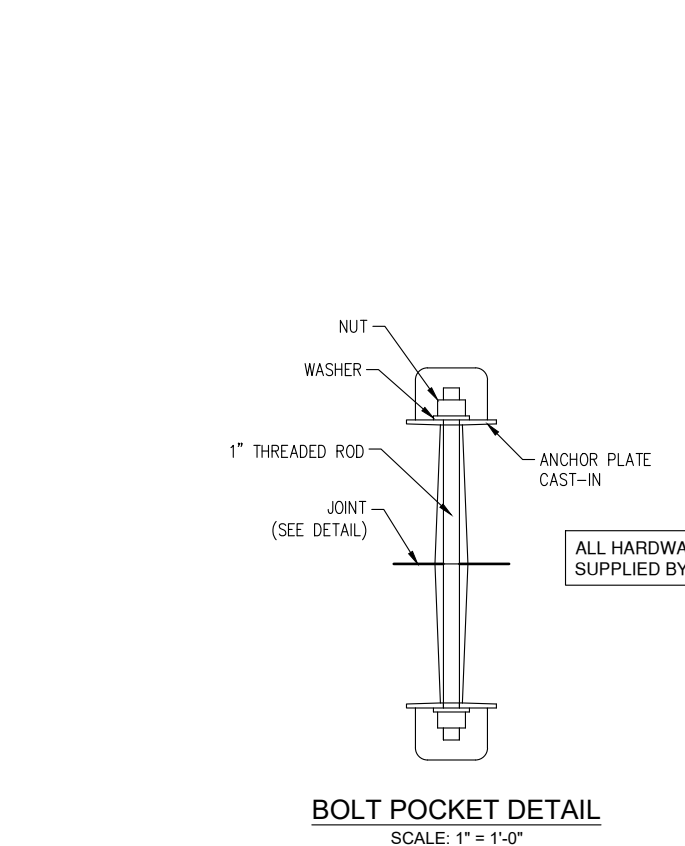
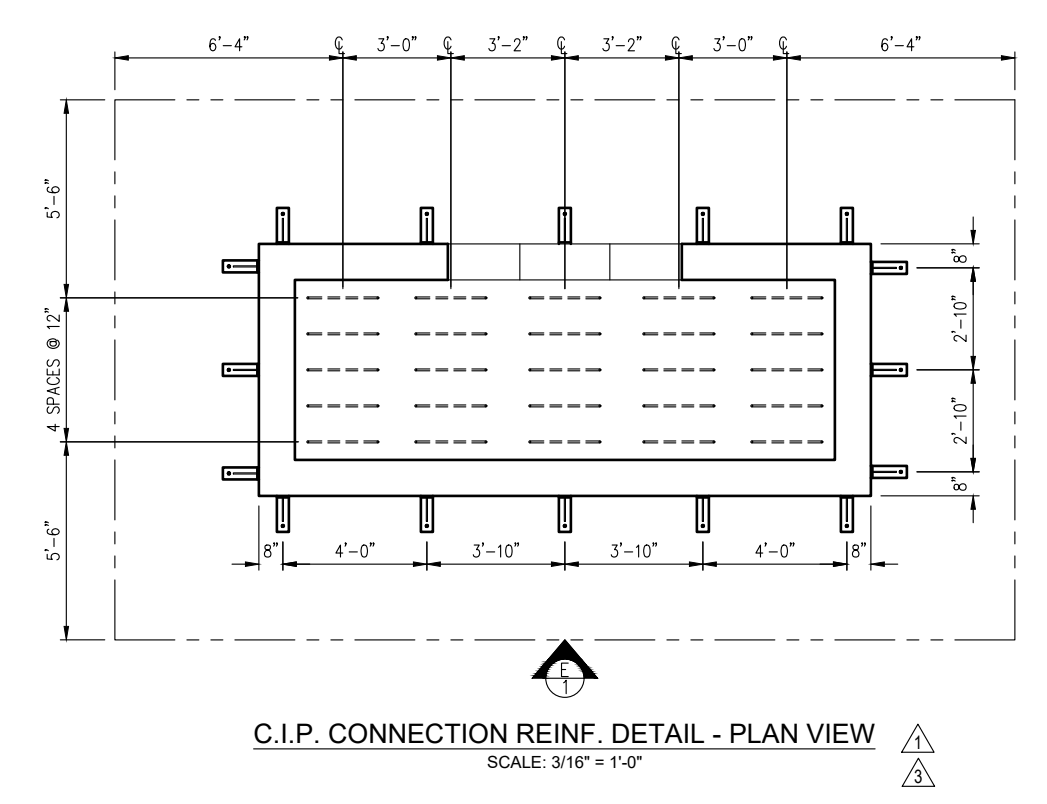
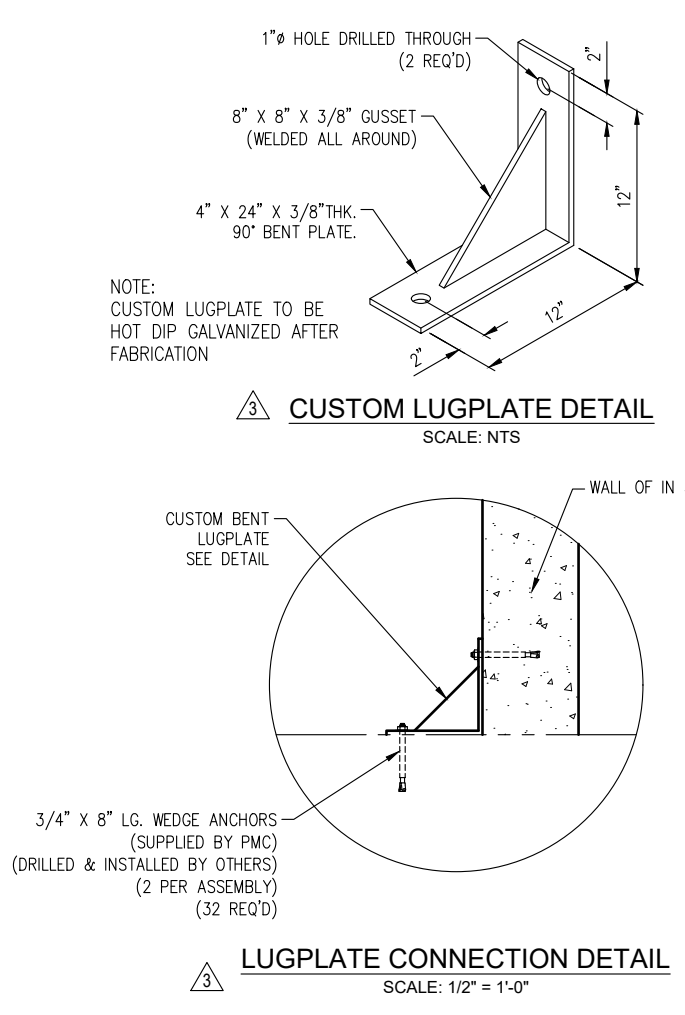
#	QTY	MATERIAL	LENGTH	SHAPE
R1	22	#6 BAR	16'-9"	STR
R2	22	#6 BAR	6'-9"	STR
R3	30	#7 BAR	6'-9"	STR
R4	30	#7 BAR	16'-9"	STR
R5	71	#4 BAR	4'-9"	STR

TOTAL REBAR WEIGHTS
 SIZE WEIGHT
 #4 228 LBS. EPOXY
 #6 777 LBS. EPOXY
 #7 1442 LBS. EPOXY



DESIGN NOTES
 CONCRETE MIN. STRENGTH - 5000 PSI @ 28 DAYS
 STEEL REINFORCEMENT - ASTM A615, GRADE 60 (EPOXY COATED)
 COVER TO STEEL - 1 1/2"
 A. DEAD LOADS: 4,000 PSF OVERBURDEN
 B. LIVE LOADS: 240P PSF
 C. HYDROSTATIC: 1,500 PSF
 D. SEISMIC LOADS: A=0.20 G.

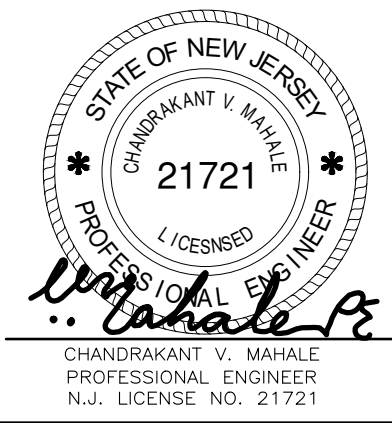
ALL REINFORCEMENT TO BE EPOXY COATED



SLUICE GATE NOTES:
 PETILLO TO COORDINATE SLUICE GATE SIZING AND INSTALLATION PRIOR TO PRODUCTION

REVISIONS

REVISION	DATE	BY	SHEET	DESCRIPTION OF REVISION	REASON FOR REVISION	REQUESTED BY
1	5/31/19	BW	005	ADDED REINF. SCHEDULE DETAILED CONNECTION TO DIP SLAB. CHANGED TO ALL EPOXY COATED STEEL. VARIOUS GENERAL REVISIONS.	PER REQUEST	VAN CLEEF, F&P
2	6/27/19	BW	005	ADDED NOTE REGARDING GATE.	PER REQUEST	
3	7/18/19	BW	005	REVISIONS PER 3RD REVIEW	PER REVIEW	F&P



PRECAST MANUFACTURING CO.
 187 STRYKER ROAD PHILLIPSBURG, NJ 08865 PHONE: 908-454-2122
 WWW.PRECASTMFGCO.COM FAX: 908-454-0512

THIS DOCUMENT IS THE PROPERTY OF PRECAST MFG. CO. IT IS CONFIDENTIAL, SUBMITTED FOR REFERENCE PURPOSES ONLY AND SHALL NOT BE USED IN ANY WAY INJURIOUS TO THE INTERESTS OF, OR WITHOUT THE WRITTEN PERMISSION OF PRECAST MFG. CO.

5' X 15' INLET STRUCTURE
 DRAWING TYPE: SUBMITTAL
 PROJECT: I-78 IMPROVEMENTS
 LOCATION: PHILLIPSBURG NJ

PETILLO INC.
 CUSTOMER: PETILLO INC.
 DRAWN: BW SALES: MZ
 DATE: 5/14/19

JOB NUMBER: PM-9136
 DRAWING NUMBER: PM-9136-005