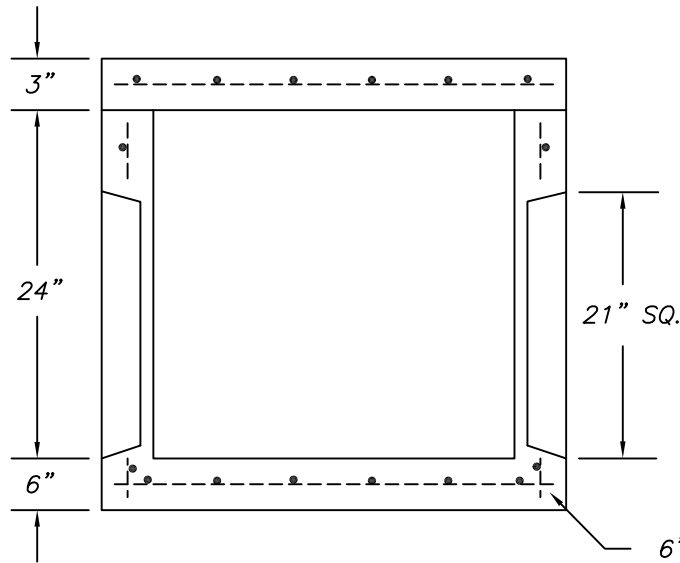


PLAN VIEW



SECTION

NOTES :

- * CONCRETE TO TEST 4000 PSI @ 28 DAYS
- * WEIGHTS :
 SPLICE BOX - 1,755 LBS.
 TOP SLAB - 340 LBS. (3" THICK)
- * CAST IRON FRAME & COVER ALSO AVAILABLE

Precast Manufacturing Co. , LLC
 187 Strykers Road Phillipsburg , N.J. 08865
 Tel. (908) 454-2122 - Fax (908) 454-0512

CONT.		
JOB		
24"x24"x24" SPLICE BOX		
DATE	DRAWN BY	DRAWING NO.
1 / 17	CLASSIC DESIGN	10-24