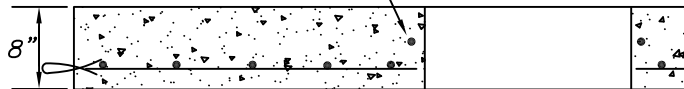


(4) #4 BARS AT 90° AROUND OPENING



NOTES :

- * CONCRETE TO TEST 4000 PSI @ 28 DAYS
- * REBARS ASTM A-615-40
- * SIZE AND SHAPE OF OPENING TO SUIT
- * APPROX. WEIGHT = 7,500 LBS.
- * LOAD RATING - HS20

Precast Manufacturing Co. , LLC		
187 Strykers Road Phillipsburg , N.J. 08865		
Tel. (908) 454-2122 - Fax (908) 454-0512		
CONT.		
JOB		
10'-0" DIA. TOP SLAB		
DATE	DRAWN BY	DRAWING NO.
1 / 17	CLASSIC DESIGN	710-T