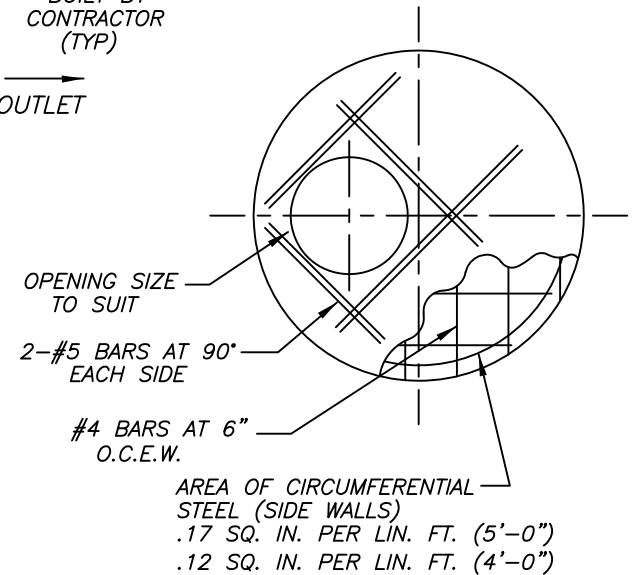
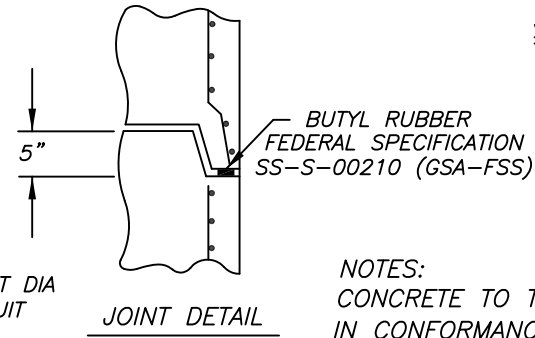


PLAN VIEW OF PRECAST MANHOLE BASE



REINFORCEMENT LAYOUT FOR 5'-0" DIA MANHOLE FLAT TOP



NOTES:  
CONCRETE TO TEST 4000 PSI @ 28 DAYS  
IN CONFORMANCE WITH ASTM C-478  
DESIGN FOR H2O LOADING

APPROX. WEIGHTS:

- BASE = 2840 LBS
- RISERS = 1295 LBS/FT
- TOP SLAB = 2747 LBS
- START RING = 2125 LBS

TYPICAL 5'-0" DIA MANHOLE WITH 4' DIA MANHOLE STACK

NOTE:

CONE DIMENSIONS	
DIA OPENING	HEIGHT
24"	36"
30"	36"

Precast Manufacturing Co. , LLC  
187 Strykers Road Phillipsburg , N.J. 08865  
Tel. (908) 454-2122 - Fax (908) 454-0512

CONT.

JOB

5'-0" DIA CONCRETE MANHOLE  
WITH 48" MANHOLE STACK

DATE

DRAWN BY

DRAWING NO.

1 / 17

CLASSIC DESIGN

3-5-S