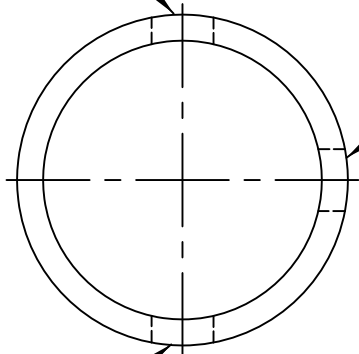


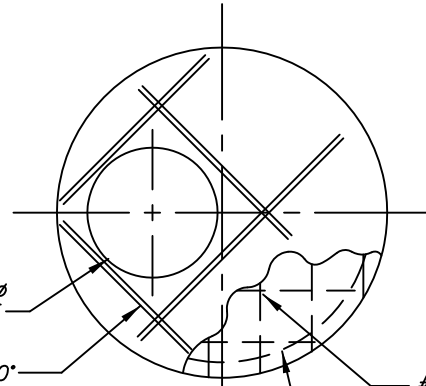
12" x 18"  
DOGHOUSE OPENING



12" x 18"  
DOGHOUSE OPENING

PLAN VIEW

12 $\phi$  OPENING  
12" UP  $\phi$



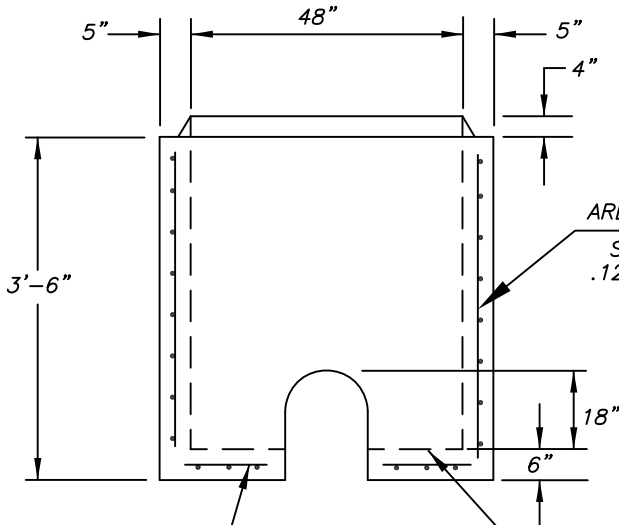
24" $\phi$  OR 30" $\phi$   
OPENING SIZE

2-#4 BARS AT 90°  
EACH SIDE AROUND  
OPENING GRADE 60 STEEL

#4 @ 6" O.C.E.W.

AREA OF CIRCUMFERENTIAL  
STEEL (SIDE WALLS)  
.12 SQ. IN. PER LIN. FT.

REINFORCEMENT LAYOUT  
FOR TOP SLAB

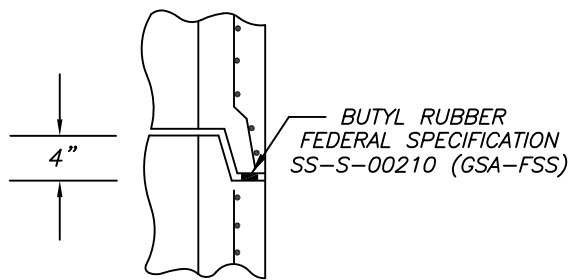
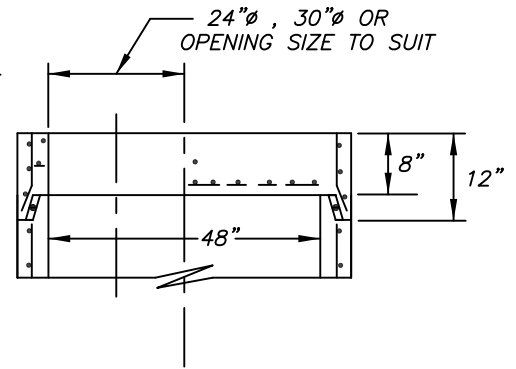


AREA OF CIRCUMFERENTIAL  
STEEL (SIDE WALLS)  
.12 SQ. IN. PER LIN. FT.

.12 SQ. IN. PER LIN. FT.  
BOTH WAYS

BARREL ELEVATION

SLOTTED BASE SLAB  
PART OF RISER



JOINT DETAIL

BUTYL RUBBER  
FEDERAL SPECIFICATION  
SS-S-00210 (GSA-FSS)

NOTES:

CONCRETE TO TEST 4000 PSI @ 28 DAYS  
IN CONFORMANCE WITH ASTM C-478

Precast Manufacturing Co. , LLC  
187 Strykers Road Phillipsburg , N.J. 08865  
Tel. (908) 454-2122 - Fax (908) 454-0512

CONT.		
JOB		
48" DIA "DOGHOUSE" MANHOLE W/SLAB		
DATE	DRAWN BY	DRAWING NO.
1 / 17	CLASSIC DESIGN	3-4DS